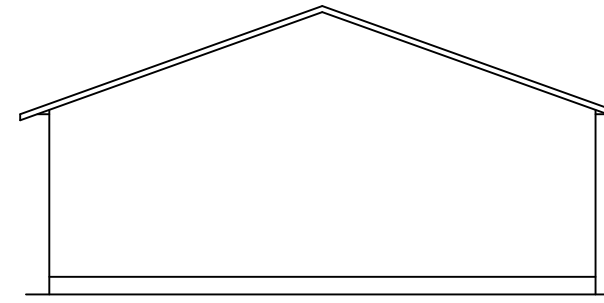
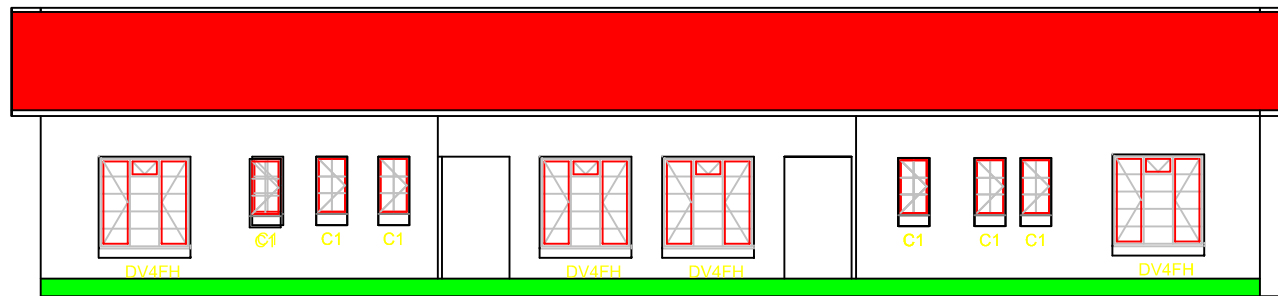


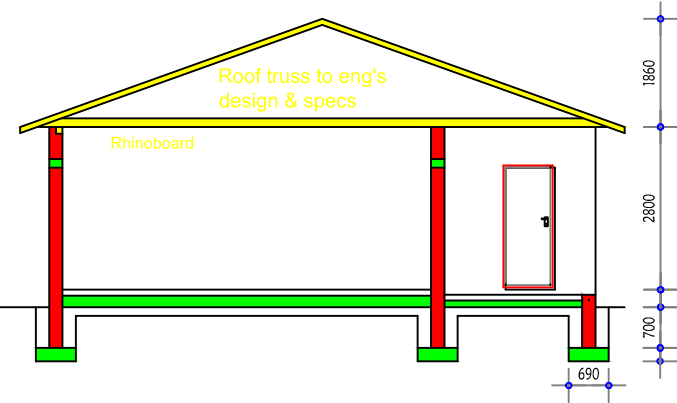
BACK ELEVATION (1:100)



SIDE ELEVATION (1:100)

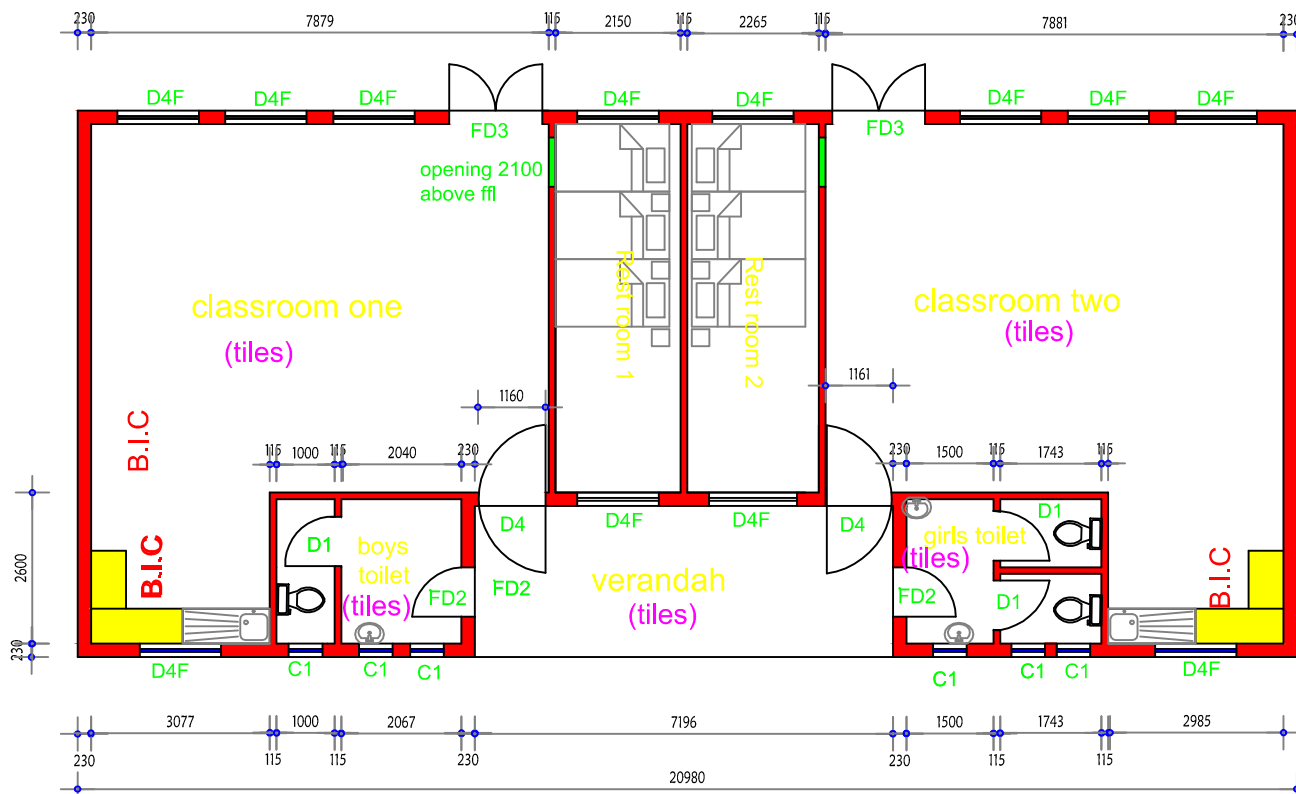


FRONT ELEVATION (1:100)



SECTION X-X (1:100)

DOOR SCHEDULE			
Type	Quantity	Description	Location
D1	04	44X760mm HW internal quality flush panel door std m.s. frame	Toilets
FD2	02	41x815mm HW external quality fanlight door with std m.s. frame	Toilets
FD3	02	44X1324mm HW external quality double door with std m.s.frame	classroom
D4	02	44x950x2100mm HW Wing Door	classroom



FLOOR PLAN (1:100)

**NOTES**

- Foundations**  
min. depth 700mm
- Floors**  
Non- slippery tiles on cement -sand screed on oversite conc.to approved compacted hardcore
- Walls**  
Std cement-sand/ well burnt bricks on strong cement mortar
- Windows**  
D2H window frames to be used not D8H as shown
- Roof**  
A.C sheets, IBR, Chromadek or any approved roof covering on purlins and roof truss to engineer's design & specification

**DRAWN**

Sithole S -0774049119

PROJECT TITLE

St Ambrose Matibi Pry School

DESCRIPTION

Floor Plan, Section & Elevations